



Clapton Girls'  
Academy  
Est. 1906

Challenge, Wellbeing, Teamwork

# CLAPTON GIRLS' SIXTH FORM



Top 25%



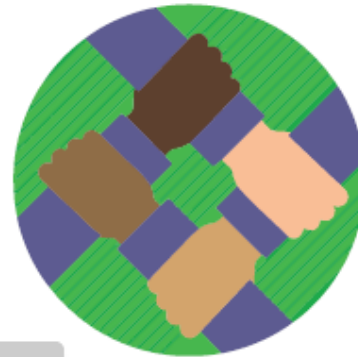
# 1. Challenge

for all



# 2. Wellbeing

for all



# 3. Teamwork

for all

# Who are the sixth form team?



**Miss Celisse**  
**(Head of KS5)**



**Miss Begum**  
**(Year 12 Head of Progress)**



**Mr Norrington**  
**(Year 12 Academic Mentor)**

# Who are the sixth form team?



**Miss Reed**  
(Associate Deputy Headteacher)



**Miss Baker**  
(Year 13 Head of Progress)



**Miss Nisha**  
(Year 13 Academic Mentor)



**Miss Storey**  
(Careers Adviser)

# Safeguarding Team



**Ms. Garvin**  
Safeguarding  
Lead



**Mr. Norrington**  
Deputy  
Safeguarding  
Lead (KS5)



**Ms. Begum**  
Deputy  
Safeguarding  
Lead (KS5)



**Ms. Bergame**  
Deputy  
Safeguarding  
Lead



**Ms. Bangura**  
Deputy  
Safeguarding  
Lead



# Year 12 Tutor Team



**Miss Midgley  
12A**



**Miss  
Geldenhuys  
12B**



**Miss Yasmin  
12C**



**Miss  
Begum/Miss  
Baker  
12D**



**Mr Ferdinando  
12E**



**Mr Mandoli  
12F**



**Miss  
Nandakumar  
12G**

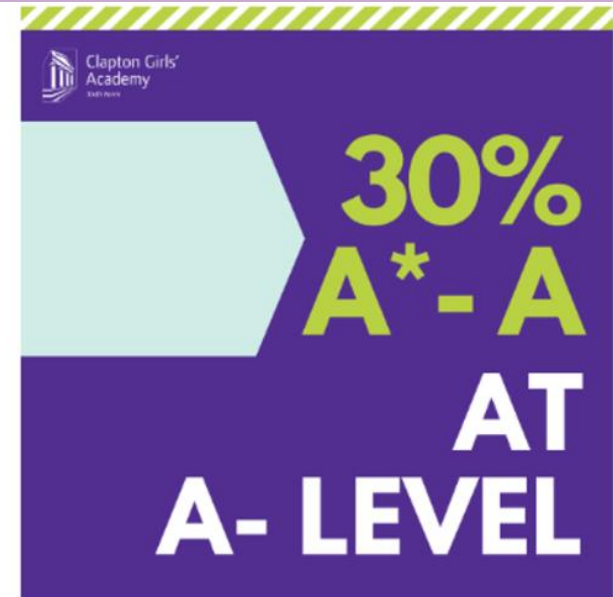
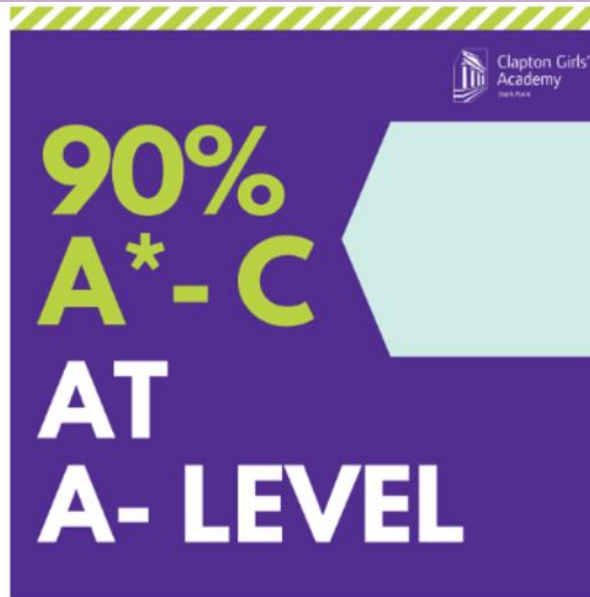


**Mr Nasskau  
12H**

# Fantastic Results at CGA



# Fantastic Results at CGA



**Year 13 had amazing results this summer which we want to share with you. We are really proud of our students and to be part of the brilliant community that we have here at Clapton!**



# Results and Destinations

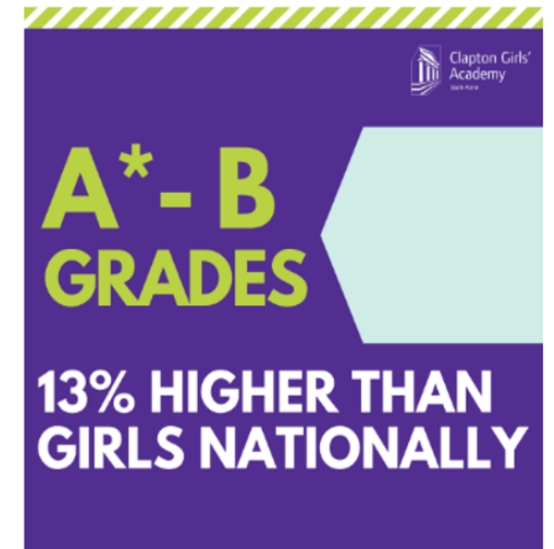
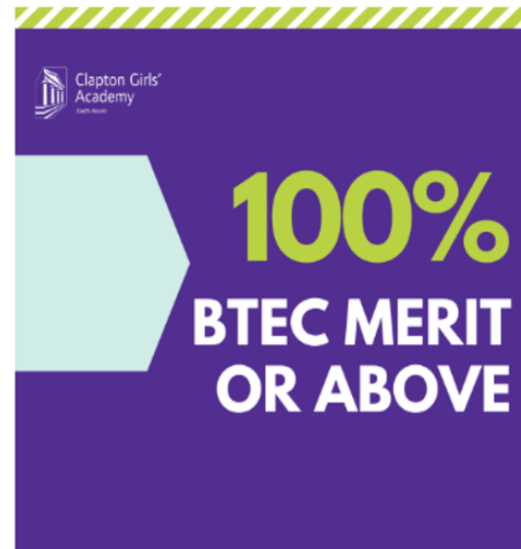
## Destinations

\*80% first choice university places

\*38% to Russell Group universities

\*Wide range of exciting courses and apprenticeships

\*CGA students are heading everywhere, including Manchester, Leeds, Scotland



# Results day – Hear from our students



[Results day Part 1](#)



[Results day Part 2](#)





- Alps grade 1 - better or equal to the best score achieved in the indicator - **Outstanding**
- Alps grade 2 - scoring between the 90th and 99th percentile - **Outstanding**
- Alps grade 3 - scoring between the 75th and 89th percentile - **Excellent** ←
- Alps grade 4 - scoring between the 60th and 74th percentile - **Very good**
- Alps grade 5 - scoring between the 40th and 59th percentile - **Satisfactory to Good**
- Alps grade 6 - scoring between the 25th and 39th percentile - **Below average**
- Alps grade 7 - scoring between the 10th and 24th percentile - **Less than satisfactory**
- Alps grade 8 - scoring between the 1st and 9th percentile - **Relatively poor**
- Alps grade 9 - worse than the worst score achieved in the indicator - **Poor**



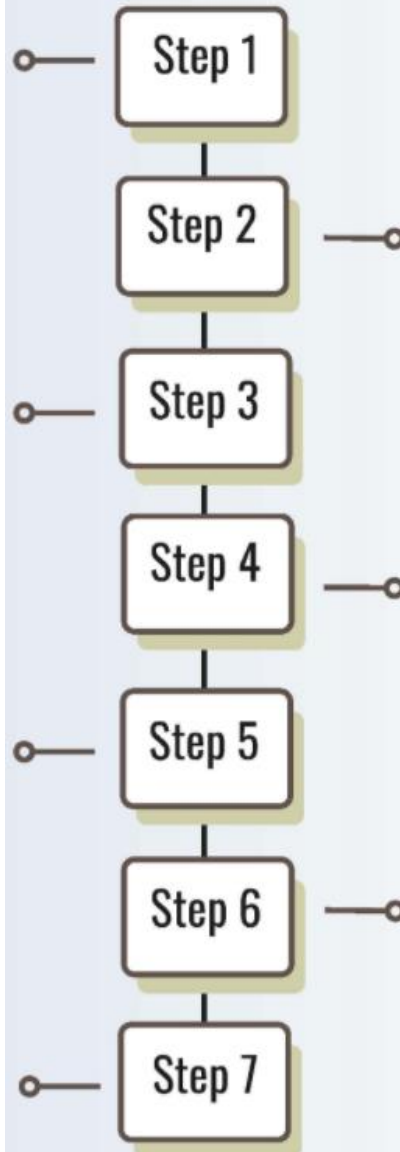
The challenge is to get out of the **BLUE** and move towards the **RED**. If you are already in the **RED** the challenge is to stay there. Continuous improvement is the underlying theme.

**Step 1** takes place at schools and is an introductory session about universities and challenges students' existing perceptions of the University of Oxford.

**Step 3** gets students talking and writing about their favourite subject - a good introduction to the interviews and personal statements which will come in the future. It also builds analytical reading and critical thinking skills.

**Step 5** helps students make a start on their personal statements, analysing existing statements to see what works well, what doesn't, and the kind of activities they could be doing to further their own subject interests.

**Step 7** introduces students to Oxford interviews, informing them about the process and helping them prepare.



**Step 2** is hosted at New College. Students have the chance to see three different colleges, meet current students and academics, and have a session on their current and future options.

**Step 4** is an alternative Open Day, hosted and run by current New College students, including academic sessions, social activities and a sample freshers' fair.

**Step 6** is based around the University of Oxford Open Day. Students will have the opportunity to stay at the College for the first time, before learning more about their chosen subjects and a variety of different colleges by visiting them!



### TARGETS

KS4 Attainment 70% grade 5+ including English & Maths WS1	KS5 A*-B 70% M+ for BTEC 100% WS2	100% of staff have completed a Professional Development Inquiry (PDI) WS3	180 first choices in Year 7 285 in Year 12 & 13 WS4	96 - 100% attendance WS5
--	--------------------------------------	--	--	-----------------------------



### CHALLENGE

Prioritise professional learning with the introduction of Professional Development Inquiries to further develop staff autonomy, mastery and purpose in order to ensure improved progress for all students.	C1
Continue to implement the 'Making Every Lesson Count' strategies across the curriculum so that all students are challenged, with a focus on literacy instruction and adaptive teaching.	C2
Ensure all students receive and act on teacher feedback to increase the impact of our curriculum on student outcomes.	C3



### WELLBEING



### TEAMWORK

Promote equality and belonging by developing a curriculum and culture that values, celebrates and represents all members of the CGA community.	W1	Improve collaboration between students, staff and parents to build resilience and develop strategies to ensure excellent attendance, punctuality and achievement.	T1
Promote student and staff wellbeing with a focus on encouraging strategies that support positive mental health, self care and resilience.	W2	Create a positive and safe learning environment by ensuring staff and parents work together to support students with meeting the academy's behaviour expectations.	T2



COMPASSION



AMBITION



INTEGRITY



RESILIENCE

# Aims of the Evening

- Introduce facilities and support systems and keeping your child safe in school and online
- Understand expectations: attendance & punctuality, approach to learning
- Supporting your child with the challenge of Level 3 study
- University and vocational opportunities

# Attendance and Punctuality

- Aim for full attendance and punctuality  
Compulsory registration at 8.40am every day. CT is an important part of the day
- Attendance below 96.5% or poor punctuality will lead to disciplinary procedures and will affect student bursaries

Where absence is unavoidable, parental notes/phonecall must be provided.

# STUDENTS' ATTENDANCE HAS STRONG CORRELATION WITH ACHIEVEMENT

A pupil's attendance will directly affect their achievement in school. Evidence shows that a pupil's progress and attainment is affected if their attendance falls below 90% and statistics show that if pupils miss just 17 days (34 sessions) of school, their attainment is likely to drop by an entire grade.

100% attendance is 190 days in school.

8 days of absence is 96%.

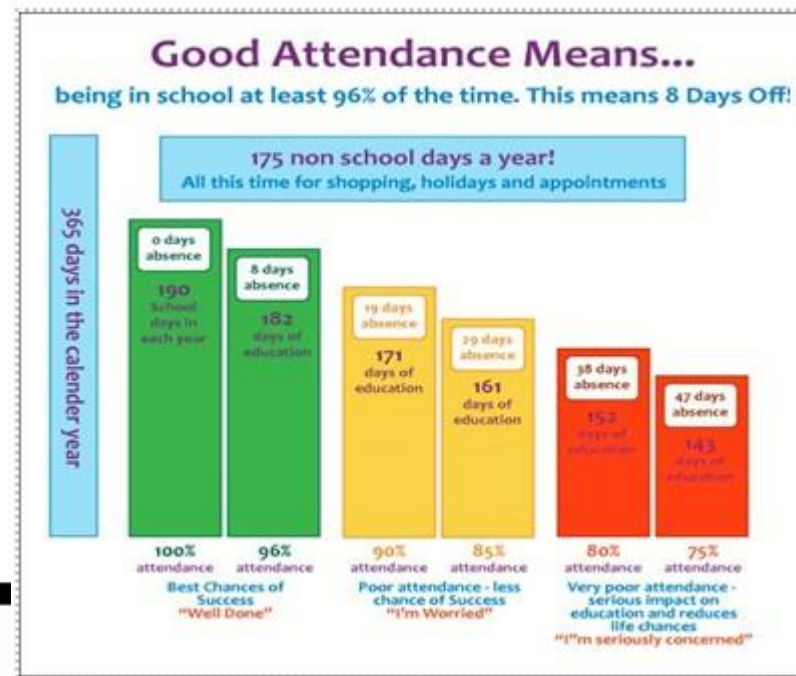
12 days of absence is 94%.

19 days absence is 90%.

29 days absence is 85%.

38 days absence is 80%.

47 days absence is 75%.





# COLLECTIVE TIME



Collective time **everyday 8.40am – 9am**

There are a range of activities, focussing on key themes and issues every week. It is an expectation that you are present and engaged throughout CT.

**Monday – Reading**

**Tuesday – Opportunities/ Woman of the week/current affairs quiz**

**Wednesday – Debate of the week/Presentations/Rewards updates**

**Thursday – Reading**

**Friday – Assembly**



## The Jump

**Yes** the jump is big.

**No** it's not unachievable.





## How to support your Child

**1. Start how you mean to go on**

**. Approximately 1 hour per subject**

**. Use study time effectively**

**. Period 1 and 2 with Mr Norrington or Ms Nisha in Supervised study. This is compulsory and will be registered**

Next  
 Tomorrow  
 Later  
 NOW



## **The Key To Success...**

### **2. Focus on you and your future**

**Be selfish!**

**Year 12 is the year where teachers write UCAS references, where we get predicted grades, where students learn 50% of their A-Level and BTEC. It is the foundation of their future.**







## **3. Be an independent learner**

**• It is an expectation that students independently learn outside of the classroom. This means:**

**1. Wider reading (on top of the textbook!)**

**2. Practice essays/exam questions and mark these**

**3. Memorising checking/testing**

**• Teachers cannot give your child every single thing they need to get a top grade – The examiner is looking for independent learning.**



## 4. Ask for help

- **Part of being a mature, independent young adult is having the courage and humility to admit that you don't know something and to ask for help.**
- **Ask subject teachers for extra guidance or support.**
- **Students should NOT wait until they have done poorly in their PPEs. This is too late.**

**Don't bury your head in the sand!**





Clapton Girls'  
Academy  
Sixth Form

# Partnerships



Clare College  
Cambridge



Queen Mary  
University of London

Linklaters



SOAS  
University of London

Goldsmiths  
UNIVERSITY OF LONDON



KING'S  
*College*  
LONDON

## Careers Provision

- All year groups are supported by the school's Careers Lead, Ms Storey. Her office is next to the Zone (N63) and students are welcome to drop in and talk to her.
- Year 12 students are entitled to the following support:
  - Opportunities to speak to employers and education providers through trips and visits
  - Work-related learning in the curriculum, during Focus Days and in PSHCE lessons supported by our business partners (Linklaters, UEL, Greenhouse, Goldsmiths, Jelly London, Reach Out 2 Kids, Sir Robert McAlpine)
  - Impartial advice on their options (e.g. university courses, apprenticeships, jobs)
  - Support with accessing and creating their own profiles in Unifrog and MySupercurricular
  - Regular updates about available opportunities (e.g. mentoring, events)
  - A work experience placement of one week or more (depending on course type)
- Students are welcome to apply for our mentoring programme with employees from Sir Robert McAlpine if they are interested in careers relating to the built environment.





All students are supported through a wide array of opportunities we offer

- **Goldsmiths Progression scheme**
- **UCL Uni Link**
- **Kings College K+**
- Queen Marys University Mentoring
- Oxford and Cambridge Residential
- SOAS writing mentors
- **SOAS Global Scholars**
- Pathways to Law
- Pathways to Medicine
- **Hackney University Extension**
- Imperial College Academic tutors
- Kings College Med view programme
- Accountancy and Business challenge
- Inspire Apprenticeship scheme
- St Bart's Nursing volunteers
- Barbican theatre
- Linklaters internships
- **Into the city internships program**
- **Social Mobility Foundation**
- Hackney Citizens
- Hackney Winter night shelter
- Macmillan Cancer
- New views writing project
- Westminster EPQ scheme



Clapton Girls'  
Academy  
Est. 1906

# Challenge, Wellbeing, Teamwork



**GRESHAM**  
COLLEGE

SINCE 1597

## Extra and Supercurricular

Students will be expected to showcase wider engagement with their courses and the world around them as part of their personal statements and job/apprenticeship applications.



To support with this, CGA subscribes to resources such as MySupercurricular.co.uk and Unifrog.org, which allows the students free access to MOOCs, events, podcasts, volunteering opportunities, career and university subject databases and ways of recording their activities.



Please also encourage your child to participate in additional non-academic activities to develop their employability skills such as teamwork, confidence, self-motivation and problem solving. Local suggestions include: St John's Ambulance cadets, Hackney Shed theatre group, volunteering for Artburst or in charity shops, committing to sports teams. For more ideas please speak to Ms Storey.





## Work Experience

- All Year 12 students have allocated work experience periods this year
  - Health and Social Care BTEC – 22nd January to 2nd February, plus 29th April to 3rd May
  - A level and Applied Science BTEC – 20th to 24th May
  - Business BTEC – 8th to 19th July
- Work experience should be considered an opportunity to experience the world of work. Every placement is an opportunity to develop employability skills and an understanding of the workplace.
- Students are expected to source their own placements. Any questions, please speak to Ms Storey.
- Commitment, good manners and a willingness to get stuck in are crucial. CGA staff will be in touch with all employers during placement to check student engagement.
- Students hoping to work in a care setting (e.g. nursery, old people's home, hospital) will need to undergo a DBS check. Please see Ms Storey as soon as possible if this applies to you.
- We will hold student and parent information sessions to support with this process at a later date.



## Extended Project Qualification : EPQ

- CGA offers many enrichment options to ensure students have the best possible chance of pursuing their chosen path (university, apprenticeship, employment) including the **EPQ: Extended Project**
- A qualification (worth half an A Level, up to 28 UCAS points, A\*)
- Project carried out **independently** by the student (either dissertation, artefact, investigation, performance)
- Chosen area of interest. Assigned a mentor to guide them.





## Extended Project Qualification: EPQ

- **Many Russell Group universities think highly of the EPQ.** Some universities will include the EPQ in a points-based offer.
- Enhances personal statement/interviews
- It demonstrates a candidate's ability to be an independent learner. **Skills assessed in the EPQ are similar to those that are expected of an undergraduate/employee**





## Free School Meal applications

- Students need to apply for FSM through the **ONLINE** application through the **Hackney Education website**.
- If you received FSM in the past, you must reapply in order to be eligible this year.
- Please apply for FSM this week, as this will support the bursary application.



## Bursary Applications

### Bursary Criteria

Bursaries will be allocated (subject to available funds) on 2 levels based upon the following criteria:

#### **LEVEL 1**

- A Young Person in Care
- A Care Leaver
- A young person in receipt of Income Support
- A disabled young person in receipt of Employment and Support Allowance who are also in receipt of a Disability Living Allowance

#### **LEVEL 2**

- Students who are eligible for **free school meals**
- As a guideline to the alternative income related eligibility, please consider the current household income band that allows the claiming of free school meals ie. up to £16,190p.a.



## Bursary Applications

- All students will be able to get a bursary application form in school this week
- All applications must be dropped off to Mr Norrington with the required evidence **by Wednesday 27th September 2023. If you miss this deadline you will lose out on payments.**
- Students will find out if you are eligible at the end of October and bursary payments will be backdated to September
- Students who have a change in household circumstances may submit in year applications to Mr Norrington at any time





# Important Bursary Information

## Payments

**You receive a payment once every 6 weeks (every half term) via BACS transfer. The bank details on the form **must** belong to the student, not the parent; the payment will only be sent to student accounts.**

## Conditions

Each week students attendance, punctuality and behaviour is checked. If you have any unauthorised days off, any lates or any behaviour points, you will **not** receive bursary for that week.



## Discretionary Bursary Fund

- The discretionary fund is for specific educational purposes such as: educational visits or exceptional travel expenses to university interviews. It is a one-off payment.
- Students who wish to be considered for Discretionary Fund payments need to complete the application form.
- All forms can be collected from the sixth form office in Nightingale



## MyED - How we communicate with you

It is really important that **ALL** parents/persons with parental responsibility download the app from their app store. Aside from saving the academy money, other advantages to the app are that it is a one stop shop where you get up to date information about all aspects of your child's school life including attendance, achievements, behaviour, holiday dates and other key academy dates. The app also allows you to link directly to Satchel:One and Parent Pay.

**If you have any questions about the app, questions about what to do if you don't have a smart phone, or maybe even need help downloading the app, please contact Ms Nolda Halderman on 020 8985 6641 ext. 252**

<https://www.myedschoolapp.com/>

**NEW FOR PARENTS**

**MY Ed**

3. Teamwork  
for all  
How are you supporting these priorities?

<https://www.myedschoolapp.com/>

Connecting parents, students and schools

**Download our school app NOW**

SCAN ME

The graphic features a smartphone displaying the MyEd app interface with a search bar and several menu options. A QR code is located at the bottom left of the graphic.



## YOUR PLAN.



## Sixth form journey





# Help your child think about:

- Their physical and mental health
- Are they getting enough sleep and exercise?
- Number of hours they are studying and working a part time job
- How to keep safe and make good decisions
- Can they manage their finances and budget
- Use a washing machine?
- Can they cook some basic healthy meals?

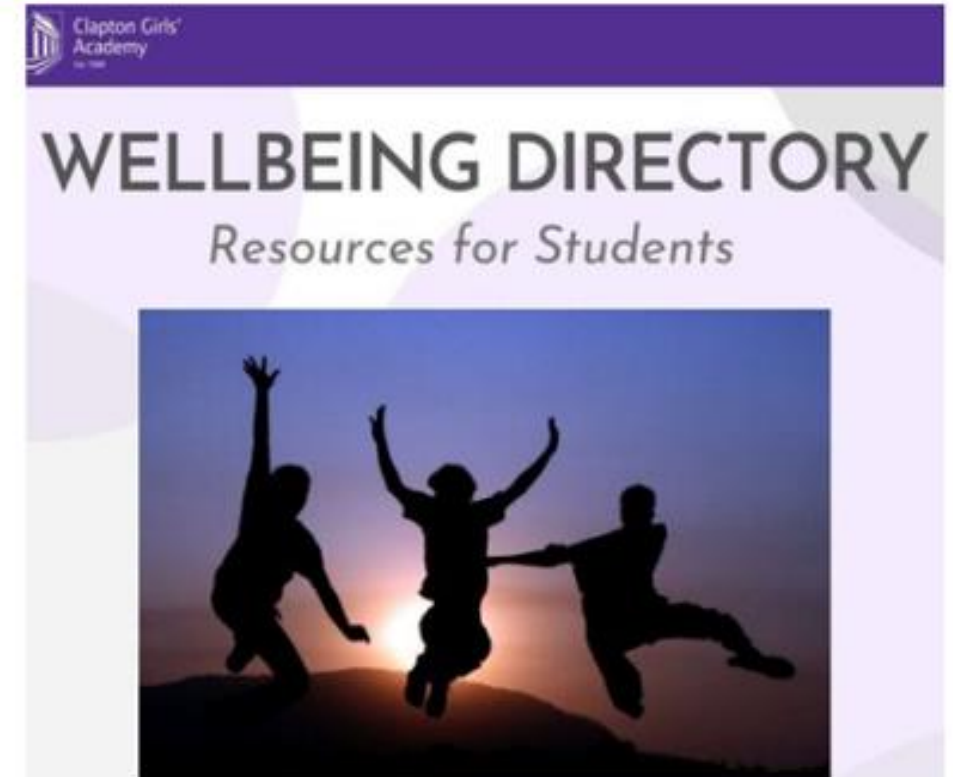
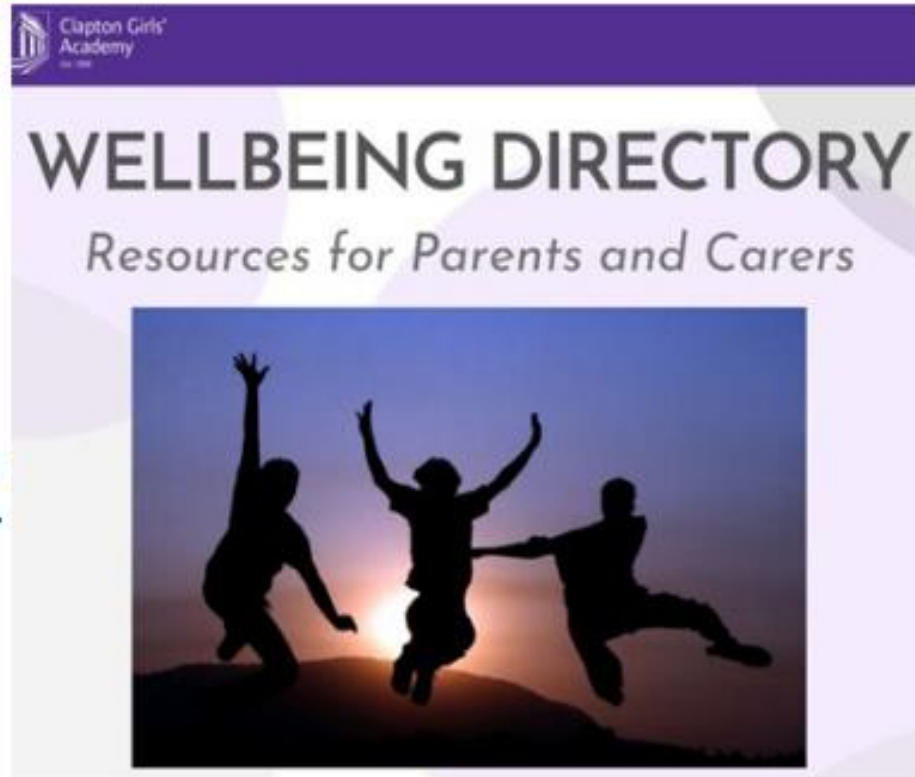




# Challenge, Wellbeing, Teamwork

The webpage includes two wellbeing directories which contain direct links to lots of useful websites

[Mental Wellbeing — Clapton Girls' Academy](#)





## Parent groups

- **Clapton Girls' Academy** is honoured to have two dedicated parent groups, both working tirelessly to better the outcomes for all of our students.
- Our groups are **The Friends of CGA** and the **Global Majority Parents Group**.
- Representatives of both groups are here to speak with you this evening. Pass over your contact details after this presentation if you want to get involved.
- Being an active parent in your child's school life will better their outcomes, so sign up today!





## Parent Trustee election:

A letter will be sent to you this Friday asking if anyone would be interested in becoming a Parent Trustee at CGA.

- The letter explained what skills are needed to become a Trustee and what the responsibilities will be. You do not have to be an expert in education – just a strong commitment and willingness to undertake training on effective governance.
- We particularly welcome applications from groups who are under-represented on the Board of Trustees.
- If you are interested in this opportunity, please read the letter or speak to a member of staff tonight.



# KEY DATES

- PPEs – Start from 9th January
- PPEs – Start from 24<sup>th</sup> June
- Year 12 Parents' Evening on 22<sup>nd</sup> Feb (4-6.30pm)
- Year 12 UCAS Parents' Evening 25<sup>th</sup> of April (5.30-6.30pm)





## Home School Communication Policy

Coordinator	Anna Feltham
Review Frequency	Annually
Policy First Issued	July 2023

<https://www.claptongirlsacademy.com/policies>

## Home School Communication:

- Positive impact on student learning;
- Sets standards & expectations;
- Help parents reach the member of academy staff who is BEST placed to address query;
- Please ensure we have MOST UP-TO-DATE contact details;



## Guidance for Parents Policy

Coordinator	Anna Feltham
Review Frequency	Annually
Policy First Issued	July 2023

## Guidance for parents Policy

- Create a safe, respectful and inclusive environment for students, staff and parents;
- Work together in the best interest of our students;



## Home School Communication Policy

<b>Coordinator</b>	Anna Feltham
<b>Review Frequency</b>	Annually
<b>Policy First Issued</b>	July 2023



<https://www.claptongirlsacademy.com/policies>

### Who should I contact?

If you have questions about any of the topics in the table below, or would like to speak to a member of staff:

- Email or call the academy main reception on [cga@clapton.hackney.sch.uk](mailto:cga@clapton.hackney.sch.uk) or 0208 985 6641.
- Put the subject and the name of the relevant member of staff (from the list below) in the subject line for any emails.
- The reception team will forward your request to the relevant member of staff.

**Please remember to** check our website first, much of the information you need is posted there. We try to respond to all emails within two working days.

I HAVE A QUESTION ABOUT...	WEBSITE/EMAIL LINKS
My child's learning/class activities/lessons/homework	The Head of Faculty or Subject for the relevant subject Send a MyEd message or email <a href="mailto:cga@clapton.hackney.sch.uk">cga@clapton.hackney.sch.uk</a>
My child's wellbeing/behaviour/pastoral support	Head of Year Send a MyEd message or email <a href="mailto:cga@clapton.hackney.sch.uk">cga@clapton.hackney.sch.uk</a>
Payments	Email <a href="mailto:finance@clapton.hackney.sch.uk">finance@clapton.hackney.sch.uk</a>
Trips and visit	This will vary depending on the trip. Please email <a href="mailto:CGA@clapton.hackney.sch.uk">CGA@clapton.hackney.sch.uk</a> or call main reception.
Uniform/lost and found	<a href="mailto:sreception@clapton.hackney.sch.uk">sreception@clapton.hackney.sch.uk</a>





Clapton Girls'  
Academy  
Sixth Form

# ORLA'S JOURNEY



Orla Callaghan was our Head student last year and is now studying at Cambridge University!